

## Case Study

# Project Wrong-way driving detection



# Project Wrong-way driving detection

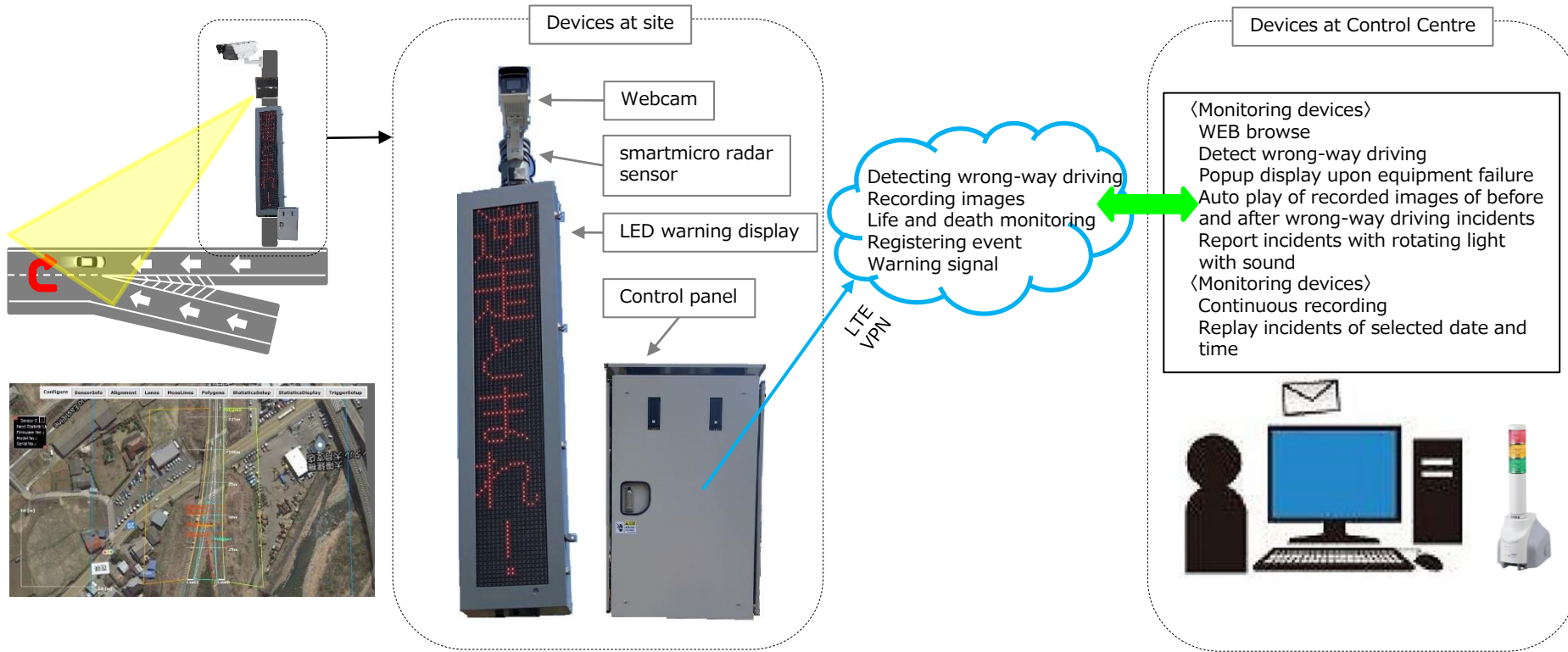
## Summary

- ✓ This project is based upon the motto 'Zero tolerance of accident caused by wrong-way driving 2020' initiated by MLIT\* made public offering to private sector.
- ✓ Thema II 'The technology which detect wrong-way driving violation at the roadside and collect its data'  
Three companies are selected.
- ✓ Aiming for practical application of wrong-way driving countermeasure technology installing at IC junctions and approach of SA and PA on Expressways, set up equipment preferentially to verify and evaluate the technology at several violation points.
- ✓ The component of devices at sites is smartmicro traffic radar sensor, LED warning display, webcam and control panel.  
Wrong-way drivers will be warned by LED display upon violation and simultaneously warning signal will be sent and images of before and after violation will be popped up and recorded at Traffic Control Centre through control panel network.

\*MLIT: Ministry of Land, Infrastructure, Transport and Tourism

# Project Wrong-way driving detection

## System configuration



# Project Wrong-way driving detection



Tsuchitaru PA



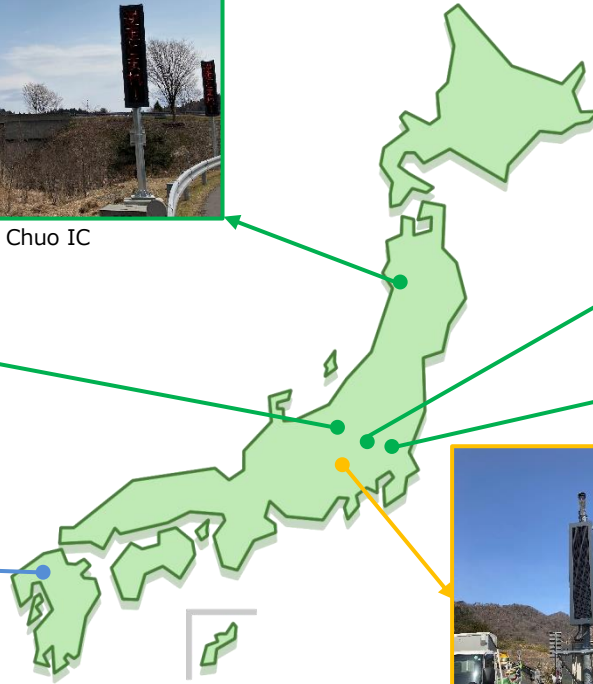
Akita Chuo IC



Toga Nishikata PA



Kurume IC



Current sites



Ohtsuki JCT



Ibarakicho Nishi IC

# Project Wrong-way driving detection

Installation site 1  
Chuo Highway, Ohtsuki JCT in Yamashi-  
prefecture 35.601174, 138.918004



Place of a radar sensor, a LED  
and a camera

mLine

Route of wrong-way driving

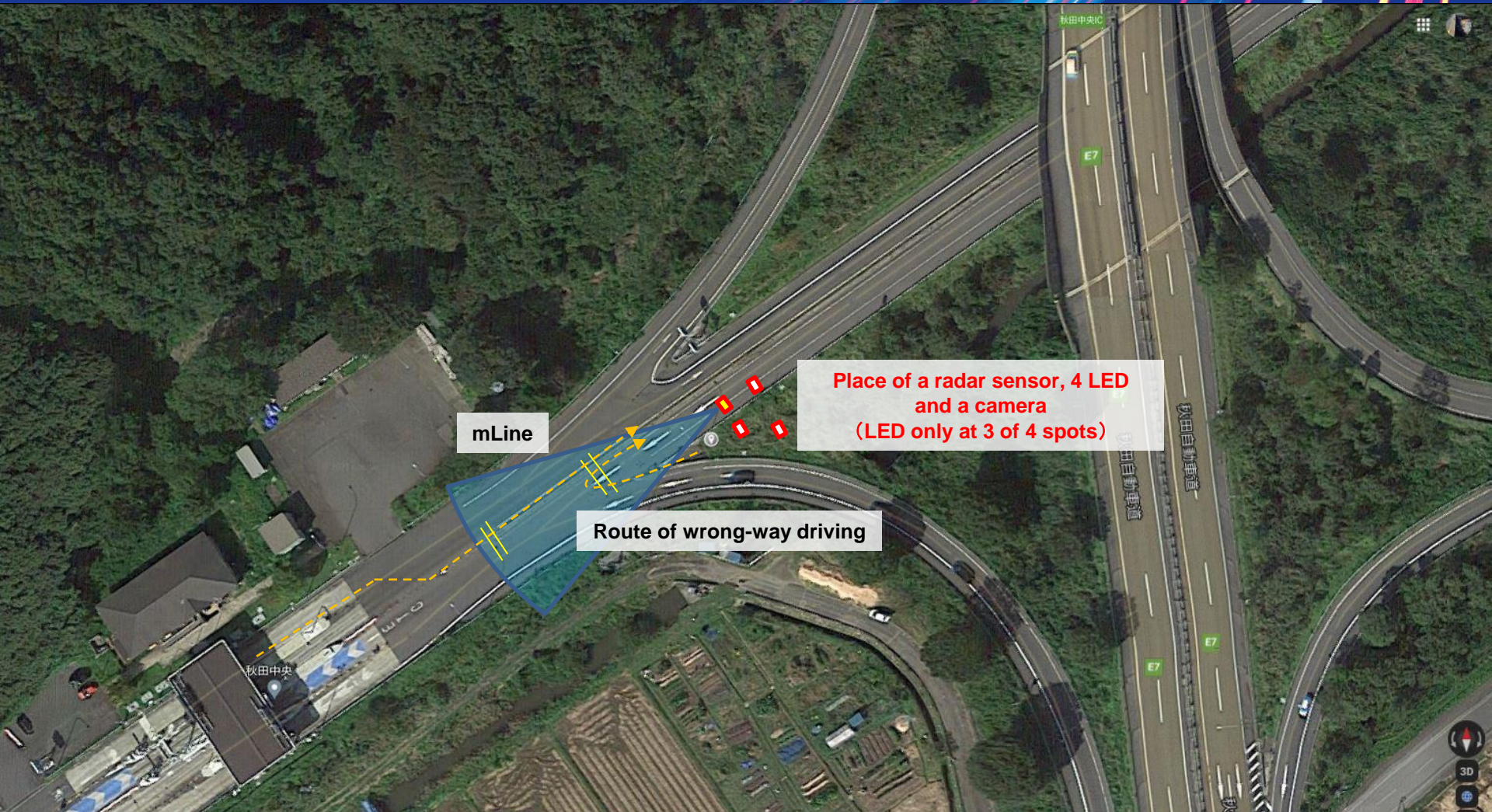
# Project Wrong-way driving detection

Installation site 1  
Chuo Highway, Ohtsuki JCT in Yamanashi-  
prefecture 35.601174, 138.918004



# Project Wrong-way driving detection

Installation site 2  
Akita Chuo IC in Akita-prefecture  
39.721600, 140.180380



mLine

Route of wrong-way driving

Place of a radar sensor, 4 LED  
and a camera  
(LED only at 3 of 4 spots)



# Project Wrong-way driving detection

Installation site 2  
Akita Chuo IC in Akita-prefecture  
39.721600, 140.180380





# Project Wrong-way driving detection

This project 'Zero tolerance of accident caused by wrong-way driving' was launched in 2020 starting from just one site. Now we are deploying at six sites among key region in Japan from North to South, and expected to be expanded.

Since then the data is being evaluated by the system and is occasionally checked.

It is still too soon to tell for the final results but the detection has never been failed, so we are aiming for the 100% achievement.

smartmicro's traffic sensors were easily installed, and offer a reliable detection solution.