

PRODUCT INFORMATION

TRAFFIC MANAGEMENT ACCESSORY

BRACKET



s.m.s, smart microwave sensors GmbH
In den Waashainen 1
38108 Braunschweig
Germany

Phone: +49 531 39023-0
Fax: +49 531 39023-599
info@smartmicro.de
www.smartmicro.com

CONTENT

- 1 User Safety Warning..... 3
- 2 Product Specification 4
 - 2.1 Straight Brackets 4
 - 2.1.1 Straight Bracket S 5
 - 2.1.2 Straight Bracket M 6
 - 2.1.3 Straight Bracket L 7
 - 2.2 Advanced Brackets 8
 - 2.2.1 Advanced Bracket S..... 9
 - 2.2.2 Advanced Bracket M..... 10
 - 2.2.3 Advanced Bracket L 11
- 3 Legal Disclaimer Notice 12

1 USER SAFETY WARNING

Please read the entire document carefully before using the device.

INSTALLATION

Please pay attention to the details below before installing and connecting the device:

- Only use provided or approved equipment for the operation.
- Only skilled and instructed persons shall install and connect the device.
- All connectors are pin-coded and fit in only one position.
- Be cautious when using the device on or around active roadways and pay attention to moving traffic.
- Make sure that test procedures are in accordance with local safety policies and procedures as well as company practices.

OPERATION

Using a bracket does not influence the sensor performance.

Please note that the device is not waterproof. Take care of proper rain coverage when working outside. Do not operate the device if the device itself or any cables are damaged.



Do not dispose electrical and electronic equipment in household trash.

TECHNICAL SERVICE

Only use provided or approved equipment for operation.

Do not attempt to service or repair this device:

- No user-maintainable parts are contained in the device.
- To avoid electrical shock, do not remove or open the cover.
- Unauthorized opening will void all warranties.
- smartmicro is not liable for any damages or harms caused by unauthorized attempts to open or repair the device.

2 PRODUCT SPECIFICATION

smartmicro brackets can be used to mount and adjust a smartmicro sensor for traffic management applications. There are different kinds of brackets available:

- Straight brackets: for adjusting the elevation angle
- Advanced brackets: for adjusting azimuth and elevation angle

2.1 STRAIGHT BRACKETS

Straight brackets allow for adjustments of the elevation angle. The azimuth angle must be set by choosing an appropriate mounting position.



Straight bracket attached to a pole using straps

Following straight brackets are available:

Bracket Type	Sensor Compatibility
Straight Bracket S ¹	UMRR-11 Type 132 UMRR-0A Type 30
Straight Bracket M ²	UMRR-11 Type 44 UMRR-11 Type 45 UMRR-0A Type 29
Straight Bracket L ³	TRUGRD (UMRR-12 Type 48) TRUGRD Stream UMRR-0C Type 42 UMRR-0C Type 40

¹ Previously referred to as BRACKET-030400

² Previously referred to as BRACKET-050400

³ Previously referred to as BRACKET-070600

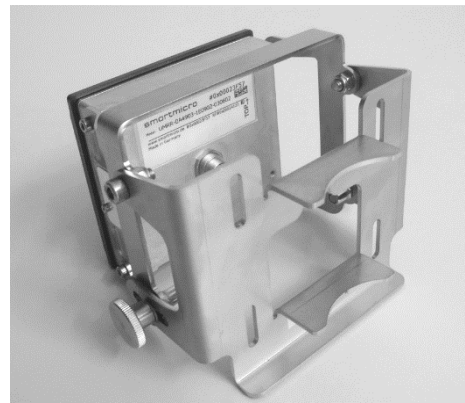
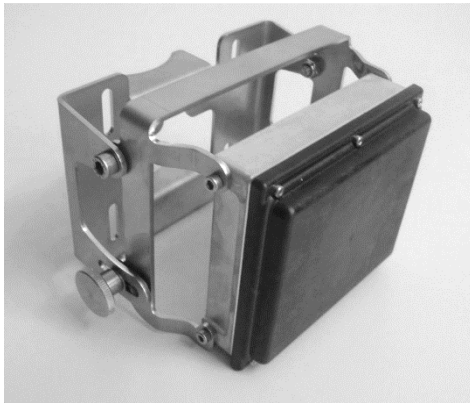
2.1.1 STRAIGHT BRACKET S

The Straight Bracket S (previously referred to as BRACKET-030400) is compatible with the smartmicro traffic management sensors UMRR-11 Type 132 and UMRR-0A Type 30.

Product characteristics:

Parameter	Typical Values
Dimensions (W/H/D over all)	143 x 104 x 95mm 5.6 x 4.1 x 3.7in
Weight	340g 12oz
Material	Stainless steel, type no. 1.4301

Product images:



Bracket, exemplarily attached to a sensor

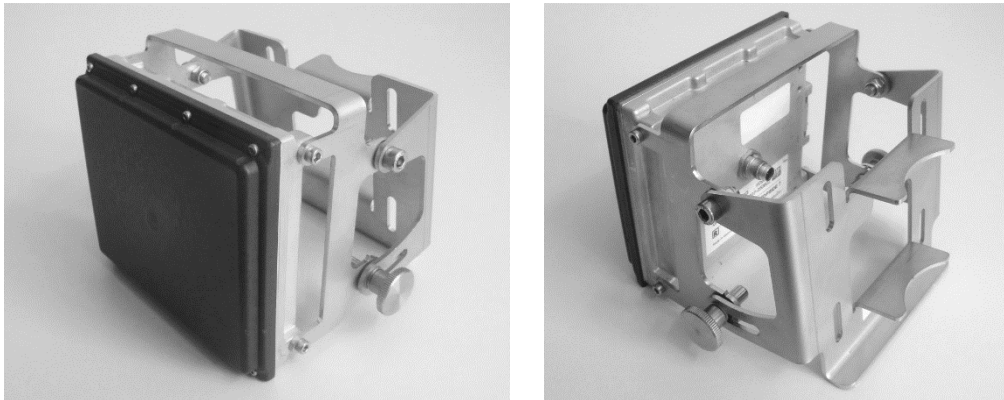
2.1.2 STRAIGHT BRACKET M

The Straight Bracket M (previously referred to as BRACKET-050400) is compatible with the smartmicro traffic management sensors UMRR-11 Type 44, UMRR-11 Type 45, and UMRR-0A Type 29.

Product characteristics:

Parameter	Typical Values
Dimensions (W/H/D over all)	142 x 106 x 95mm 5.6 x 4.2 x 3.7in
Weight	340g 12oz
Material	Stainless steel, type no. 1.4301

Product images:



Bracket, exemplarily attached to a sensor

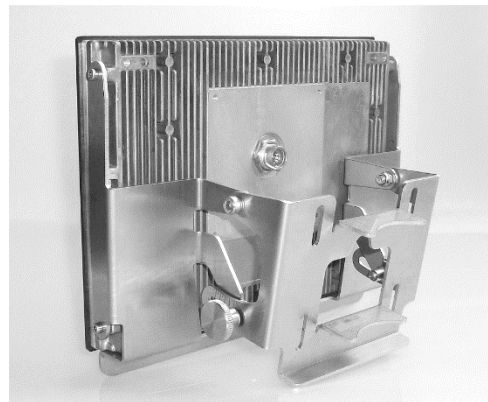
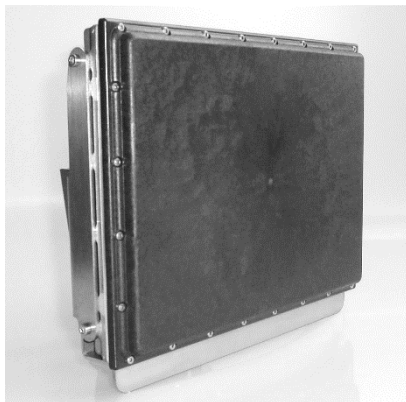
2.1.3 STRAIGHT BRACKET L

The Straight Bracket L (previously referred to as BRACKET-070600) is compatible with the smartmicro traffic management sensors TRUGRD (UMRR-12 Type 48), TRUGRD Stream, UMRR-0C Type 42, and UMRR-0C Type 40.

Product characteristics:

Parameter	Typical Values
Dimensions (W/H/D over all)	216 x 161 x 104mm 8.5 x 6.3 x 4.1in
Weight	560g 20oz
Material	Stainless steel, type no. 1.4301

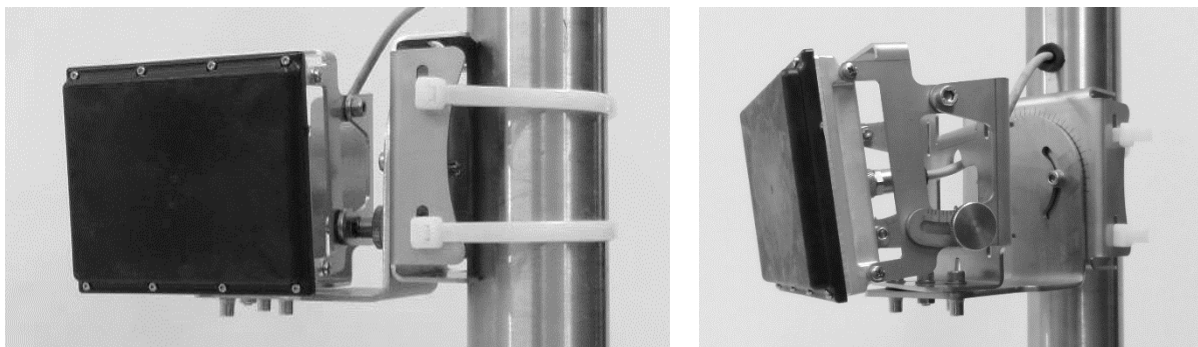
Product images:



Bracket, exemplarily attached to a sensor

2.2 ADVANCED BRACKETS

Advanced brackets allow for adjustments of both the azimuth and the elevation angle. They feature an angle scale that indicates the angle settings in increments of 5°. Horizontal and vertical bar mount are supported. The bracket orientation may be selected straight or right angled.



Advanced bracket attached to a pole using straps

Following advanced brackets are available:

Bracket Type	Sensor Compatibility
Advanced Bracket S ⁴	UMRR-11 Type 132 UMRR-0A Type 30
Advanced Bracket M ⁵	UMRR-11 Type 44 UMRR-11 Type 45 UMRR-0A Type 29
Advanced Bracket L ⁶	TRUGRD (UMRR-12 Type 48) TRUGRD Stream UMRR-0C Type 42 UMRR-0C Type 40

Please note: If an advanced bracket is used with a J-Box, the adjustment range of the elevation angle is limited, but still considered sufficient for typical measurement scenarios.

⁴ Previously referred to as BRACKET-030500

⁵ Previously referred to as BRACKET-050500

⁶ Previously referred to as BRACKET-070800. As a successor of BRACKET-070700, this bracket has additional welding spots, two added triangular-shaped metal plates and an overall increased material thickness for reduced vibration and improved stability.

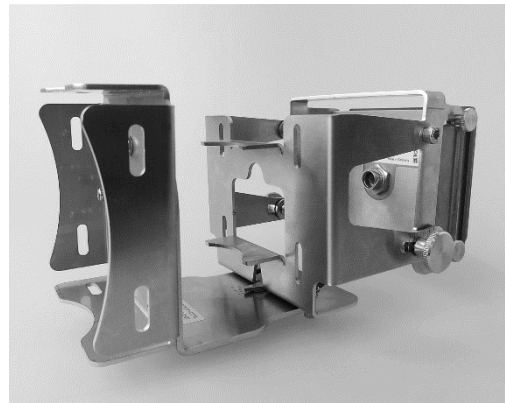
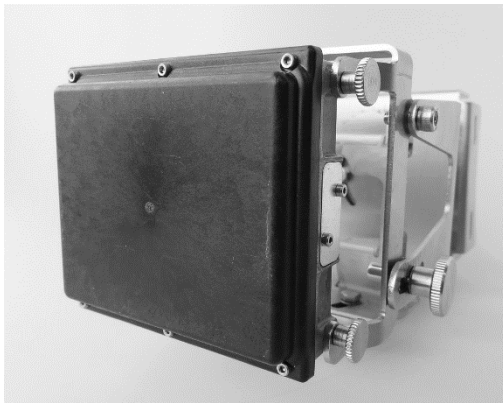
2.2.1 ADVANCED BRACKET S

The Advanced Bracket S (previously referred to as BRACKET-030500) is compatible with the smartmicro traffic management sensors UMRR-11 Type 132 and UMRR-0A Type 30.

Product characteristics:

Parameter	Typical Values
Dimensions (W/H/D over all)	142 x 116 x 198mm 5.6 x 4.6 x 7.8in
Weight	965g 34oz
Material	Stainless steel, type no. 1.4301

Product images:



Bracket, exemplarily attached to a sensor

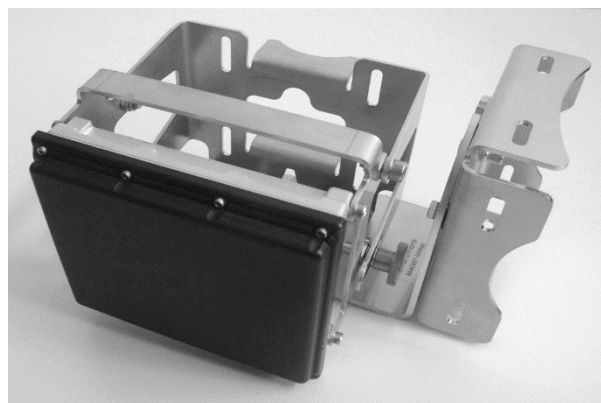
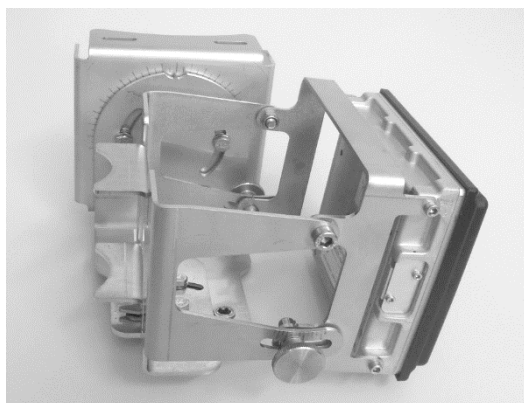
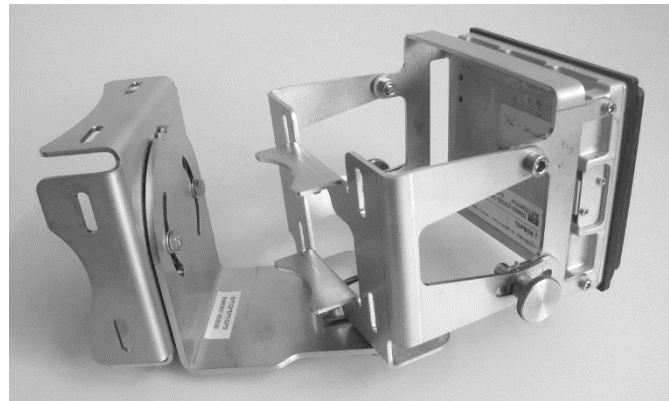
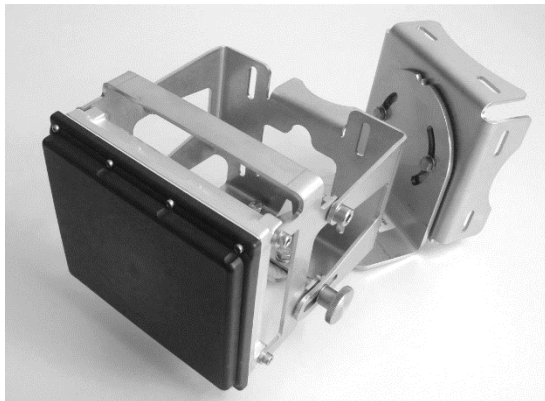
2.2.2 ADVANCED BRACKET M

The Advanced Bracket M (previously referred to as BRACKET-050500) is compatible with the smartmicro traffic management sensors UMRR-11 Type 44, UMRR-11 Type 45, and UMRR-0A Type 29.

Product characteristics:

Parameter	Typical Values
Dimensions (W/H/D over all)	142 x 122 x 202mm 5.6 x 4.8 x 8in
Weight	965g 34oz
Material	Stainless steel, type no. 1.4301

Product images:



Bracket, exemplarily attached to a sensor

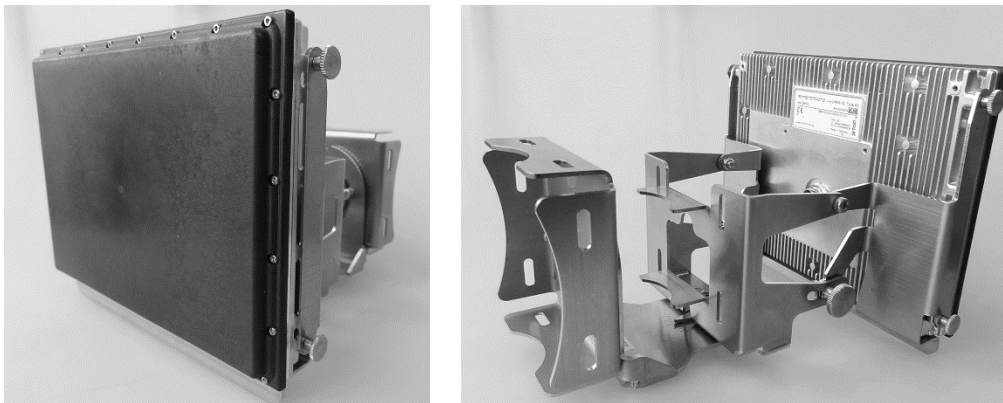
2.2.3 ADVANCED BRACKET L

The Advanced Bracket L (previously referred to as BRACKET-070800) is compatible with the smartmicro traffic management sensors TRUGRD (UMRR-12 Type 48), TRUGRD Stream, UMRR-0C Type 42, and UMRR-0C Type 40.

Product characteristics:

Parameter	Typical Values
Dimensions (W/H/D over all)	215 x 160 x 208mm 8.5 x 6.3 x 8.2in
Weight	1220g 43oz
Material	Stainless steel, type no. 1.4301

Product images:



Bracket, exemplarily attached to a sensor

3 LEGAL DISCLAIMER NOTICE

All products, product specifications and data in this document may be subject to change without notice to improve reliability, function or otherwise.

Not all products and/or product features may be available in all countries and regions. For legal reasons features may be deleted from products or smartmicro may refuse to offer products. Statements, technical information and recommendations contained herein are believed to be accurate as of the stated date. smartmicro disclaims any and all liability for any errors, inaccuracies or incompleteness contained in this document or in any other disclosure relating to the product.

To the extent permitted by applicable law, smartmicro disclaims (i) any and all liability arising out of the application or use of the product or the data contained herein, (ii) any and all liability of damages exceeding direct damages, including - without limitation - indirect, consequential or incidental damages, and (iii) any and all implied warranties, including warranties of the suitability of the product for particular purposes.

Statements regarding the suitability of products for certain types of applications are based on smartmicro's knowledge of typical requirements that are often placed on smartmicro products in generic/general applications. Statements about the suitability of products for a particular/specific application, however, are not binding. It is the customer's/user's responsibility to validate that the product with the specifications described is suitable for use in the particular/specific application. Parameters and the performance of products may deviate from statements made herein due to particular/specific applications and/or surroundings. Therefore, it is important that the customer/user has thoroughly tested the products and has understood the performance and limitations of the products before installing them for final applications or before their commercialization. Although products are well optimized to be used for the intended applications stated, it must also be understood by the customer/user that the detection probability may not be 100% and that the false alarm rate may not be zero.

The information provided, relates only to the specifically designated product and may not be applicable when the product is used in combination with other materials or in any process not defined herein. All operating parameters, including typical parameters, must be validated for each application by the customer's/user's technical experts. Customers using or selling smartmicro products for use in an application which is not expressly indicated do so at their own risk.

This document does not expand or otherwise modify smartmicro's terms and conditions of purchase, including but not being limited to the warranty. Except as expressly indicated in writing by smartmicro, the products are not designed for use in medical, life-saving or life-sustaining applications or for any other application in which the failure of the product could result in personal injury or death.

No license, expressed or implied, by estoppel or otherwise, to any intellectual property rights is granted by this document or by any conduct of smartmicro. Product names and markings noted herein may be trademarks of their respective owners.

Please note that the application of the product may be subject to standards or other regulations that may vary from country to country. smartmicro does not guarantee that the use of products in the applications described herein will comply with such regulations in any country. It is the customer's/user's responsibility to ensure that the use and incorporation of products comply with regulatory requirements of their markets.

If any provision of this disclaimer is, or is found to be, void or unenforceable under applicable law, it will not affect the validity or enforceability of the other provisions of this disclaimer.